



# 規格承認書

## (SPECIFICATION FOR APPROVAL)

File No.: Q/BH .TS16949.13TECH1303

Product Name: DC-Link capacitor (Customized products)

---

Product Type: C36(干式直流滤波电容器 定制产品)

---

Product Code: C36

---

Customer:

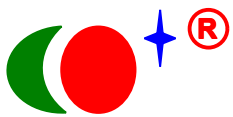
---

Customer Code:

---

Issue Date: (V3.0)

---



C36

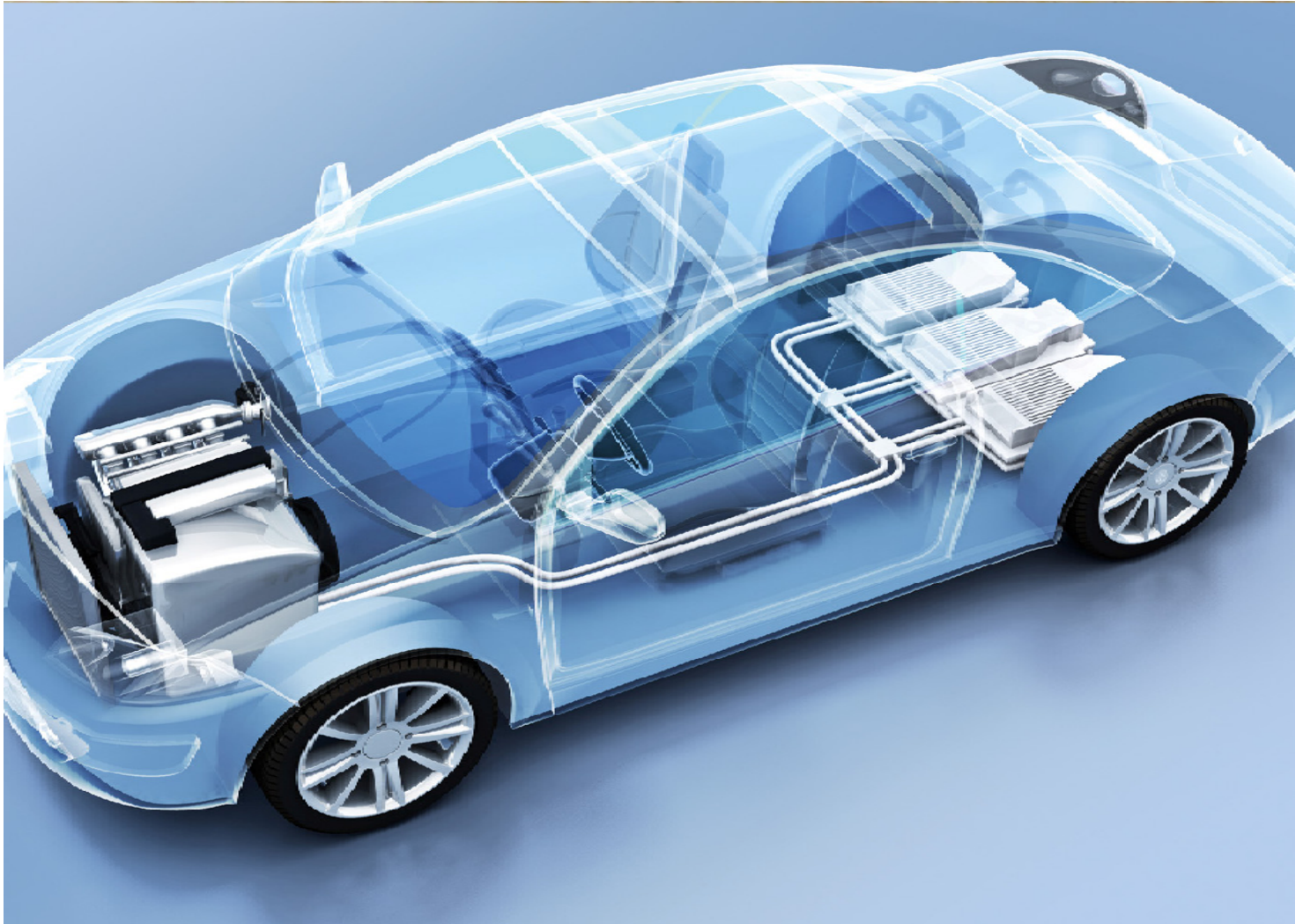
**BO HAO**

干式直流滤波电容器(定制品)

DC-Link-Capacitor (Customized products)

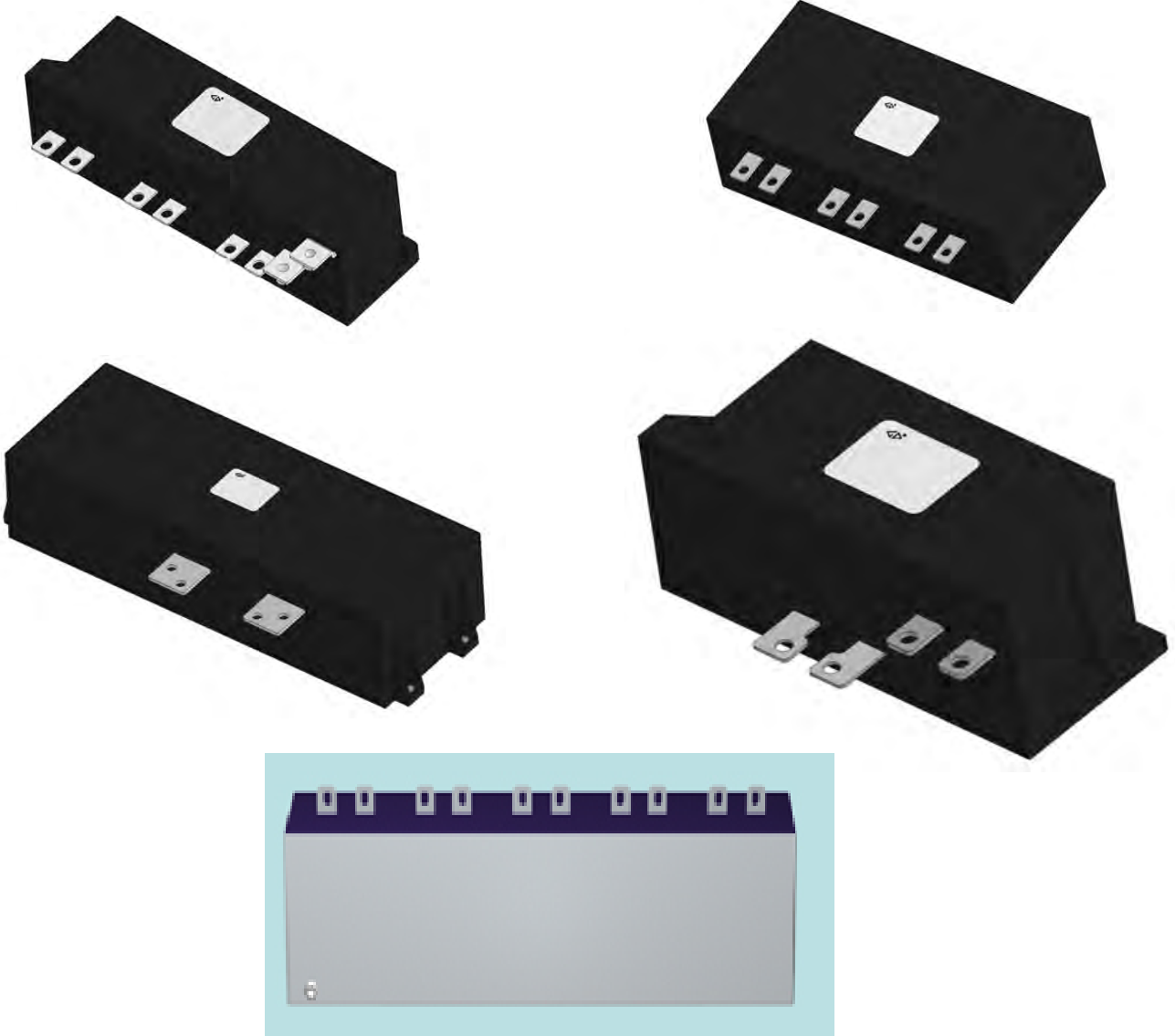
■ 外形图 Outline Drawing

Guang Zhou Nan Cai Electronic CO.,LTD.  
<http://www.egznc.com>



## 干式直流滤波电容器(定制品) DC-Link-Capacitor (Customized products)

### ■ 外形图 Outline Drawing



### ■ 特点

- 应用于直流滤波电路中，可替代电解电容
- 等效串联电阻小，能承受大的纹波电流
- 自感小
- 有自愈性
- 寿命长
- 树脂灌封

### ■ 应用场合

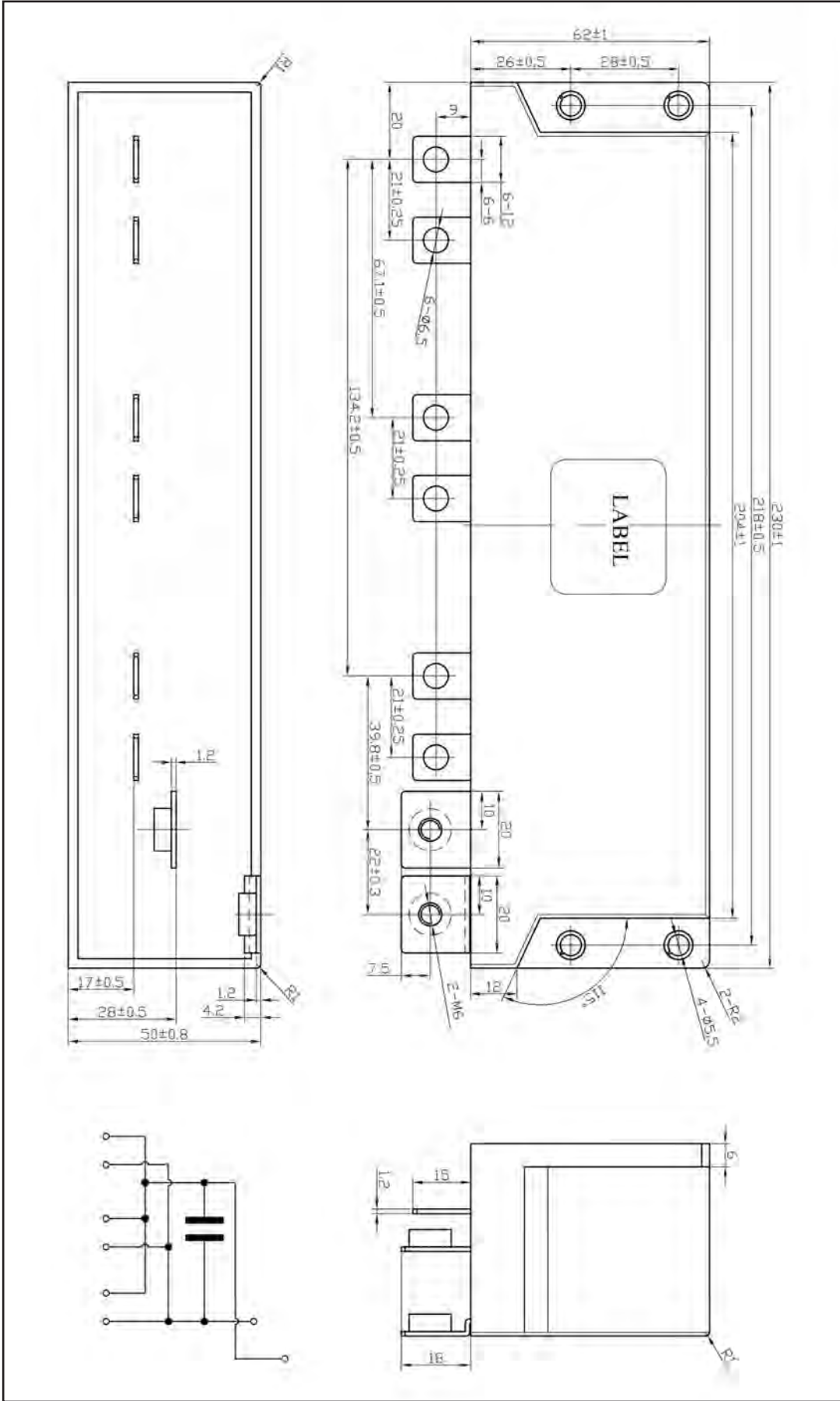
- 风能发电、太阳能发电用变频器上
- 交通工具，如：电动车和混合动力车
- 焊接设备，电梯，电机驱动

### ■ Features

- Used in DC-Link circuits, Can replace electrolytic capacitor
- Low ESR, high ripple current handling capabilities
- Low Ls
- Self-healing property
- Long lifetime
- Filled with resin

### ■ Applications

- Used in inverters of wind power and solar power
- Transportation: EV or HEV
- Welders, Elevators, Motor Driver systems



■ 产品代码 **Part number**

C362S607K0\*\*\*\*\*

■ 技术参数 **Technical Data**

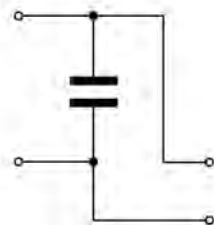
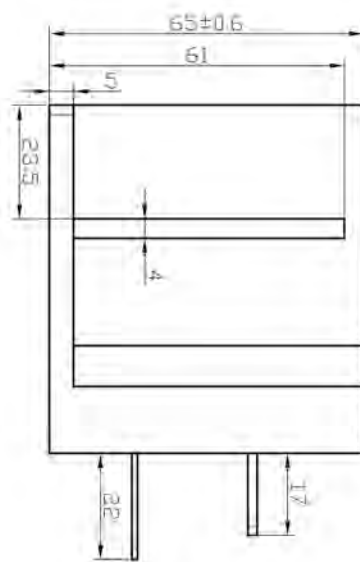
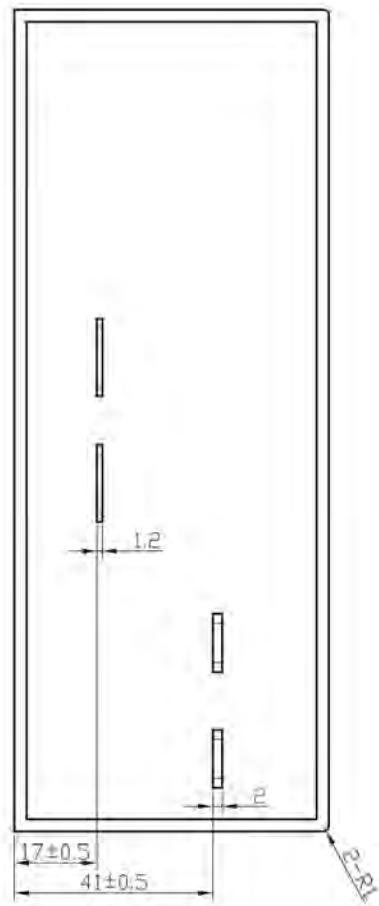
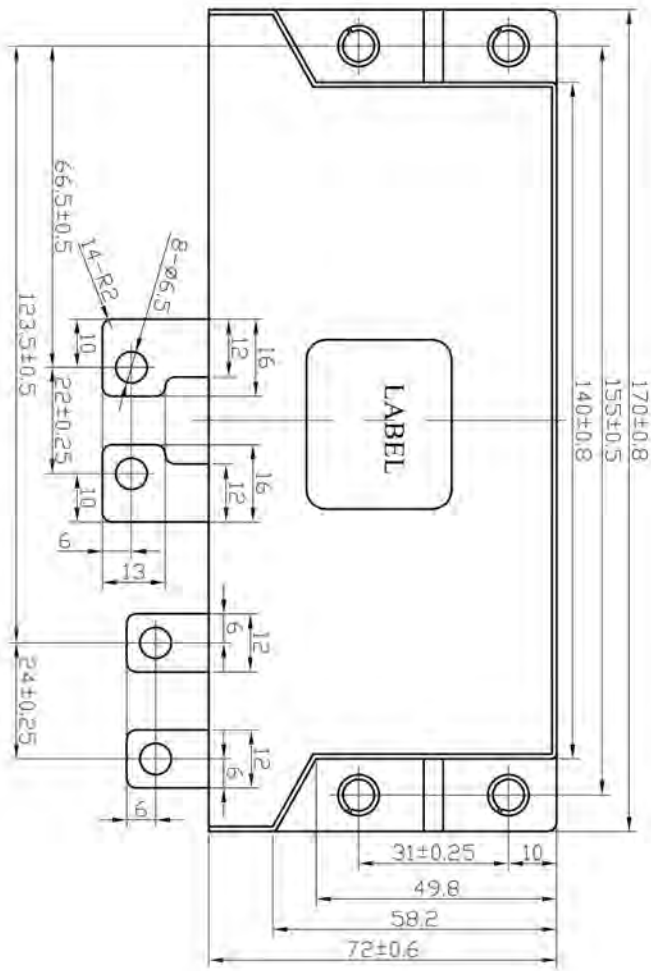
引用标准 Reference Standard	IEC 61071、AEC Q200D-2010	
气候类别 Climatic Category	40/105/56	
工作温度范围 Operating Temperature Range	-40°C~105°C [ $\Theta_{\max(\text{hotspot})} \leq 105^\circ\text{C}$ ]	
贮存温度范围 Storage Temperature Range	-40°C~105°C	
额定电压(U <sub>N</sub> ) Rated Voltage	450Vdc	
额定容量(C <sub>N</sub> ) Rated Capacitance	600μF	
电容量允许偏差 Capacitance Tolerance	± 10%(K)	
耐电压 Voltage Proof	极间 Between Terminals:	1.5U <sub>N</sub> (10s, 20°C ± 5°C)
	极壳之间 Between Terminals And Case:	3 000Vac(10s, 50Hz, 20°C ± 5°C)
介质损耗 tg δ <sub>o</sub>	0.0002	
IR x C <sub>N</sub>	≥ 10 000s (20°C, 100Vdc, 1min)	
等效串联电阻 ESR (10kHz)	0.8mΩ	
自感 L <sub>s</sub>	25nH	
热阻(热点到外壳) R <sub>thhc</sub> ( $\Theta_{\text{hotspot to } \Theta_{\text{case}}}$ )	2.0 K/W	
最大纹波电流值 Max. ripple. I <sub>rms</sub>	130A	
Ī	1 800A	
I <sub>s</sub>	5 400A	
U <sub>s</sub>	600Vdc	
爬电距离 Creepage distnce	12mm	
电气距离 Clearnce	10mm	
预期寿命 Expected Lifetime	50 000 hours(U <sub>N</sub> , $\Theta_{\text{hotspot}}=85^\circ\text{C}$ )	15 000 hours(U <sub>N</sub> , $\Theta_{\text{hotspot}}=105^\circ\text{C}$ )
失效率 Failure rate	50 FIT	
尺寸 Dimension(l x w x h)	170mm x 72mm x 65mm	
重量 Weigt	≈1.2kg	

\*  $\Theta_{\text{case}}$ : 外壳温度;

\*  $\Theta_{\text{case}}$ : Temperature of case.

\* ESR: 电容器内部串联电阻总和; \* ESR: The sum of all ohmic resistances occurring inside the capacitor.

\*  $\Theta_{\max(\text{hotspot})} = \Theta_{\text{case}} + I_{\text{rms}}^2 \times \text{ESR} \times R_{\text{thhc}}$





C36

■ 产品代码 **Part number**

C362H757K0\*\*\*\*\*

■ 技术参数 **Technical Data**

引用标准 Reference Standard	IEC 61071、AEC Q200D-2010	
气候类别 Climatic Category	40/105/56	
工作温度范围 Operating Temperature Range	-40°C~105°C [ $\Theta_{\max(\text{hotspot})} \leq 105^\circ\text{C}$ ]	
贮存温度范围 Storage Temperature Range	-40°C~105°C	
额定电压( $U_N$ ) Rated Voltage	500Vdc	
额定容量( $C_N$ ) Rated Capacitance	750 $\mu$ F	
电容量允许偏差 Capacitance Tolerance	$\pm 10\%$ (K)	
耐电压 Voltage Proof	极间 Between Terminals:	1.5 $U_N$ (10s, 20°C $\pm$ 5°C)
	极壳之间 Between Terminals And Case:	3 000Vac(10s, 50Hz, 20°C $\pm$ 5°C)
介质损耗角正切 $\text{tg } \delta_o$	0.0002	
IR x $C_N$	$\geq 10\ 000\text{s}$ (20°C, 100Vdc, 1min)	
等效串联电阻 ESR (10kHz)	0.4m $\Omega$	
自感 $L_s$	20nH	
热阻(热点到外壳) $R_{\text{thhc}}(\Theta_{\text{hotspot to } \Theta_{\text{case}}})$	1.5 K/W	
最大纹波电流值 Max. ripple. $I_{\text{rms}}$	250A	
$\hat{I}$	3 000A	
$\hat{I}_s$	9 000A	
$U_s$	650Vdc	
爬电距离 Creepage distnce	10mm	
电气距离 Clearnce	10mm	
预期寿命 Lifetime Expectancy	50 000 hours( $U_N, \Theta_{\text{hotspot}}=85^\circ\text{C}$ )	15 000 hours( $U_N, \Theta_{\text{hotspot}}=105^\circ\text{C}$ )
失效率 Failure rate	50 FIT	
尺寸 Dimension(l x w x h)	224mm x 102mm x 55mm	
重量 Weigt	$\approx 2.0\text{kg}$	

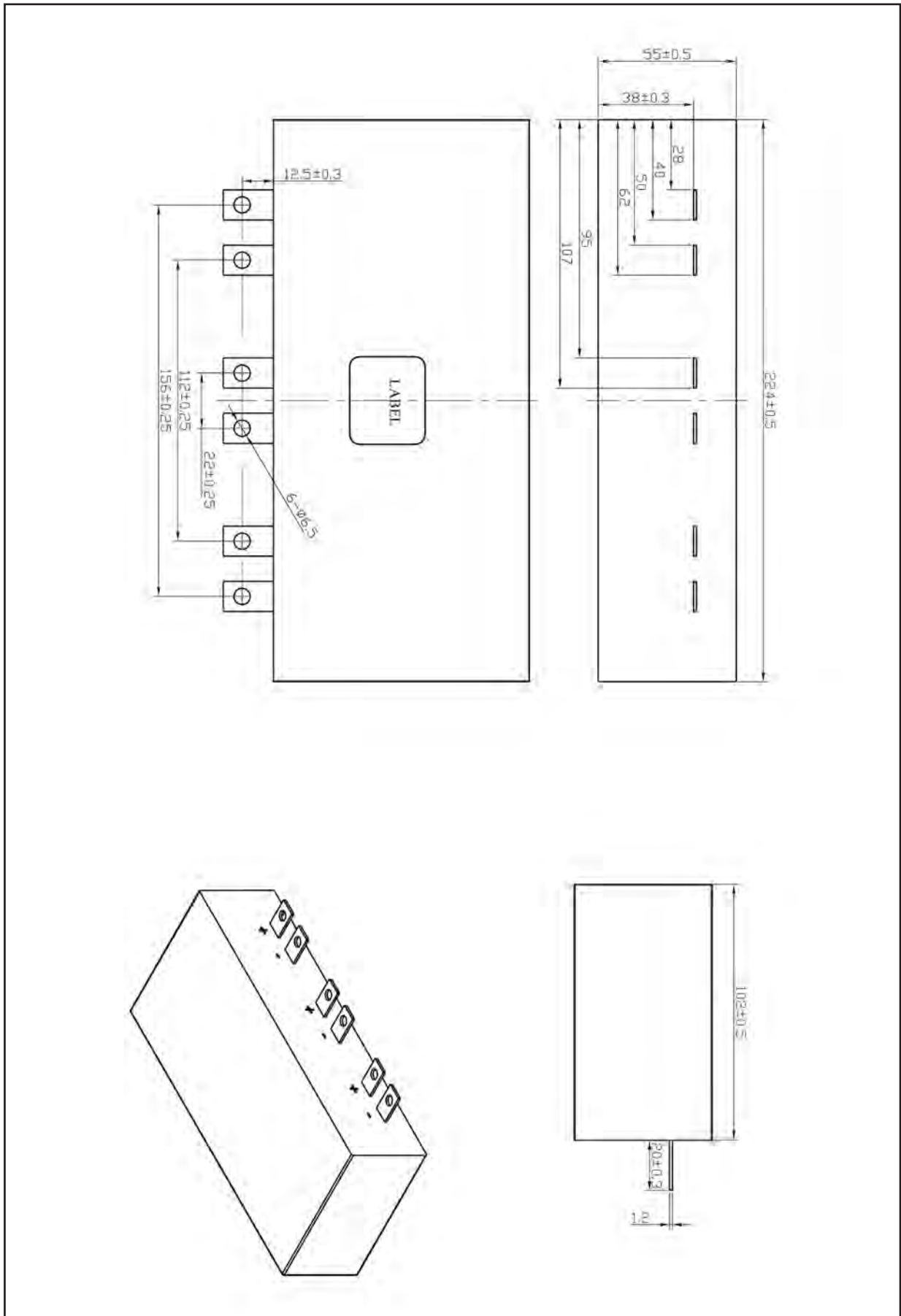
\*  $\Theta_{\text{case}}$ : 外壳温度;

\*  $\Theta_{\text{case}}$ : Temperature of case.

\* ESR: 电容器内部串联电阻总和;

\* ESR: The sum of all ohmic resistances occurring inside the capacitor.

\*  $\Theta_{\max(\text{hotspot})} = \Theta_{\text{case}} + I_{\text{rms}}^2 \times \text{ESR} \times R_{\text{thhc}}$





■ 产品代码 **Part number**

C361X158K0\*\*\*\*\*

■ 技术参数 **Technical Data**

引用标准 Reference Standard	IEC 61071、AEC Q200D-2010	
气候类别 Climatic Category	40/105/56	
工作温度范围 Operating Temperature Range	-40°C~105°C [ $\Theta_{\max(\text{hotspot})} \leq 105^\circ\text{C}$ ]	
贮存温度范围 Storage Temperature Range	-40°C~105°C	
额定电压(U <sub>N</sub> ) Rated Voltage	900Vdc	
额定容量(C <sub>N</sub> ) Rated Capacitance	1 500μF	
电容量允许偏差 Capacitance Tolerance	± 10%(K)	
耐电压 Voltage Proof	极间 Between Terminals:	1.5U <sub>N</sub> (10s, 20°C ± 5°C)
	极壳之间 Between Terminals And Case:	3 000Vac(10s, 50Hz, 20°C ± 5°C)
介质损耗角正切 tg δ <sub>o</sub>	0.0002	
IR x C <sub>N</sub>	≥ 10 000s (20°C, 100Vdc, 1min)	
等效串联电阻 ESR (10kHz)	0.4mΩ	
自感 L <sub>s</sub>	55nH	
热阻(热点到外壳) R <sub>thhc</sub> ( $\Theta_{\text{hotspot to } \Theta_{\text{case}}}$ )	1.5 K/W	
最大纹波电流值 Max. ripple. I <sub>rms</sub>	250A	
Ī	3 000A	
Î <sub>s</sub>	9 000A	
U <sub>s</sub>	1 200Vdc	
爬电距离 Creepage distnce	55mm	
电气距离 Clearnce	55mm	
预期寿命 Lifetime Expectancy	50 000 hours(U <sub>N</sub> , $\Theta_{\text{hotspot}}=85^\circ\text{C}$ )	15 000 hours(U <sub>N</sub> , $\Theta_{\text{hotspot}}=105^\circ\text{C}$ )
失效率 Failure rate	50 FIT	
尺寸 Dimension(l x w x h)	361mm x 130mm x 92mm	

\*  $\Theta_{\text{case}}$ : 外壳温度;

\*  $\Theta_{\text{case}}$ : Temperature of case.

\* ESR: 电容器内部串联电阻总和;

\* ESR: The sum of all ohmic resistances occurring inside the capacitor.

\*  $\Theta_{\max(\text{hotspot})} = \Theta_{\text{case}} + I_{\text{rms}}^2 \times \text{ESR} \times R_{\text{thhc}}$

